



complete computer solutions

Turnkey's NAV4LOG... A Microsoft Dynamics NAV Solution

Introduction

Turnkey's NAV4LOG system has been developed in conjunction with both UK and Irish sawmill companies and is truly representative of the day to day requirements in this complex business environment.

The system caters for the management of logs from the initial bidding process, contract creation and management, weighbridge processing, through a scanner (where available) and into production, providing all of the necessary management reporting and documentation to ensure a thoroughly professional business process is maintained.

Bidding

- Where the purchase of logs commences with a tender process, data relative to the invitation to bid can be recorded, and the appropriate tender generated.
- Successful bids are automatically converted to Contracts with no retyping
- Emails can be automatically generated to staff to advise of new contracts.
- All invitations to bid held indefinitely in the system.
- Key statistics maintained including:
 - Contracts showing all costs accrued can be compared against the original bid;
 - Unsuccessful bids can record the name of the successful purchaser and prices paid if known;
 - No bids or where the tender is withdrawn can be stored and the details, e.g. where an inspection and bid assessment has been made, can be stored and retrieved should the contract be re-opened to tender.



Contracts

- Contract records are set up either with data entered manually for a private purchase or automatically without manual data entry from the bidding process described above.
- Retains all contract information including supplier, source, product type, species, invoice method e.g. standard, self bill etc.
- Provides instant picture of up to date contract status e.g. volumes and percentage of contract delivered to date.
- Holds pricing data for automatic supplier payments where appropriate;
- Holds cross reference to haulier(s) and agreed pricing for this contract; and
- Provides visual reconciliation of deliveries against contract quantities with drill down to detail.



Suppliers

Retains all of the necessary details for trading with suppliers to ensure automatic processing:-

- Summary financial status of supplier is instantly available with drill down to detail;
- Self bill invoices produced for relevant suppliers;
- Data required for electronic trading with selected suppliers held for automatic routing of electronic payments; and
- Automatic payment processing based on user defined rules.



Harvesters/Extractors

Harvesters and extractors are simply a different type of supplier who can be assigned to specific contracts, sites, species and grades within contracts. More than one contractor can be assigned and costs apportioned accordingly.

‘Harvesting only’ contracts are catered for using the customer’s weight ticket as input and advance payments to harvesters are catered for during the automatic payment routines.

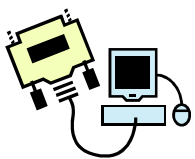
Hauliers

Hauliers represent another type of supplier and for these the system provides:-

- Self-billing facilities for selected hauliers;
- Haulier-specific information including:
 - vehicle details based on registration number; and
 - driver details based on vehicle.



Interfaces



The system is interfaced to both weighbridges and log scanners (where used). This ensures that data is captured automatically from these devices and imported directly into the system.

By eliminating the need to re-key data into Log Management, users achieve greater processing speeds, eliminate manual errors and achieve 100% accuracy in processing

Interfaces - Republic of Ireland

Where the user is required to run the Coillte system, two additional interfaces are provided. These ensure that users avoid the requirement to input the same data into two systems. One interface imports weighbridge data electronically from the AWS system, and the other imports conversion factors, and any changes to weighbridge tickets made by Coillte, electronically from their FIS system.

The Interface Process

The system monitors the grading and quality of logs from arrival at the weighbridge until they enter the mill. The process is highly automated and very little keyboard input is required.

Weighbridge

- Since haulier vehicle and driver are details held in the system, there is no requirement for weighbridge staff to re-key known data and data entry is achieved quickly.
- Weighbridge readings are transferred electronically to the system, ensuring no opportunity for error. The vehicle tare weight is checked against system data when the vehicle departs and any exceptions are reported. Weighbridge tickets are printed automatically.
- Loads are “tagged” and stored individually so that the scanner results can be applied to individual loads.
- Note: the system caters for multiple weighbridges updating a central system.

Scanner

- Instructions to scanner operator are clear and concise to minimise errors.
- Logs are scanned individually with the results fed back electronically to the record held in Log Management, ensuring highest possible accuracy.



Where No Scanner Available

The many benefits of Turnkey’s Log Management system, albeit without the high degree of accuracy from a scanner, are still available where no scanner is deployed. These are:-

- Payment by ton or by cube using pre-agreed conversion factor, normally updated by reference to measured loads, eg one load in 20 is proving quite accurate.
- Self billing with automatic posting to ledgers.
- Electronic trading with suppliers, specifically Forestry Commission.

Reporting

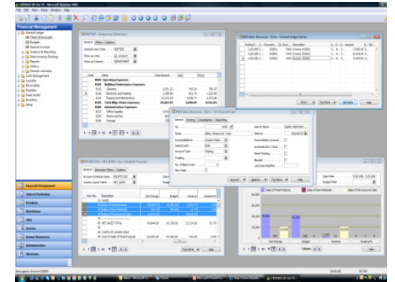
- Detailed reporting is available against specific loads showing information such as oversize and rejected logs assisting with any re-negotiation of price required with a supplier.
- Reporting is available based on both volume and weight.
- Selling on (pulp chips bark etc) is accommodated within the system.
- Statistics on supplier performance are maintained, a useful aid in future negotiations.

Supplier/Haulier Payments (using e-business where relevant)

- The system can be set up to make payments against either self bill or supplier invoices.
- Electronic payment (e-business) transactions are catered for through XML (using Forestry Commission schema format) or via other electronic formats such as BACS.

Accounting

The Log Management system is fully integrated with Microsoft Dynamics NAV (Navision), a comprehensive business accounting system. Navision is recognised as probably the most flexible accounting system available for small to medium-sized companies, providing instant access to key management information.



Where there is a sound reason to retain an existing accounting system, we shall be pleased to provide an electronic interface, where possible, from Log Management into existing accounts. This means that there is no requirement to manually enter invoices and payments produced in Log Management into your existing accounting system.

Modular

The system is fully modular, so that you can install only those elements required to automate your specific business needs. For example:-

Weighbridge only

With this module only, sufficient data is captured at the weighbridge to facilitate electronic trading with suppliers.

Weighbridge plus Contract Management

Installing these modules enables you to record contracts and assign individual loads to these. This facilitates detailed reporting to suppliers on their performance and self-billing of deliveries based on contract level criteria.

The above is simply a snapshot of some of the functionality available.

For further details or to enquire on how we may assist your business contact Turnkey at:

w: www.turnkey-bs.com

e: sales@tctl.co.uk

t: 0141 644 5444